

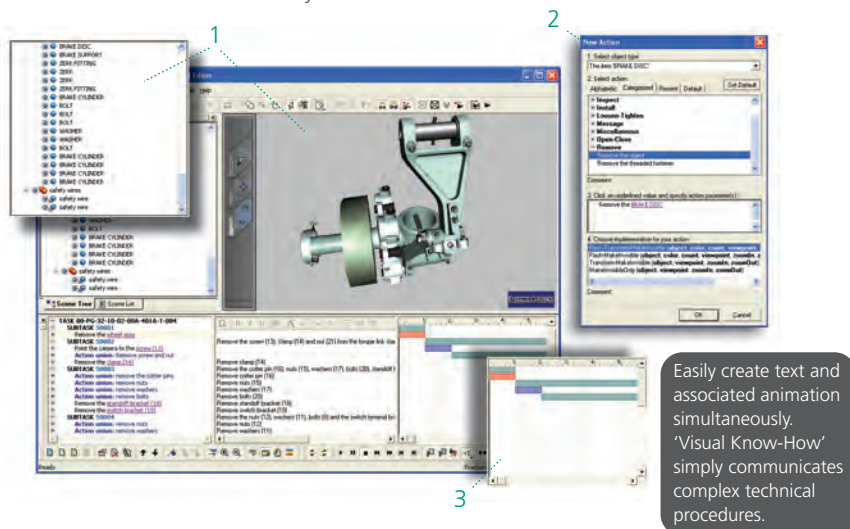
EASILY CREATE INTERACTIVE 3D MANUALS

You are responsible for operations, service, technical or customer support. You face major challenges trying to communicate complex procedures to a global market effectively and efficiently. Traditional methods just don't work and are laborious, costly and error-prone. Now there is a better solution!

Cortona3D RapidManual is the first 'out of the box' toolkit for fast and easy production of digital interactive manuals. RapidManual uses animated 3D simulations to clearly communicate complex mechanical procedures. 3D manuals encourage 'Visual Know-How' rather than reading comprehension, minimizing translation issues and improving information retention.

CREATE 3D MANUALS IN MINUTES

RapidManual provides an easy to use, intuitive framework that allows authors to easily create interactive manuals, both 3D animations and associated text simultaneously.



1. Select the part in either the Cortona3D viewer or from the parts list
2. Choose an action from an easily extendable library of animation actions such as: 'loosen/tighten', 'disconnect/connect'
3. Timelines, actions and viewpoints can be modified, if required
4. Preview your animation in the 3D viewer
5. Publish the finished project as a stand-alone document or integrate into any external system

WHO USES OUR PRODUCTS?

- Airbus
- Oracle
- BMW
- Sukhoi
- Ford
- ABB
- NIST
- US Army
- Loral

BENEFITS AT A GLANCE

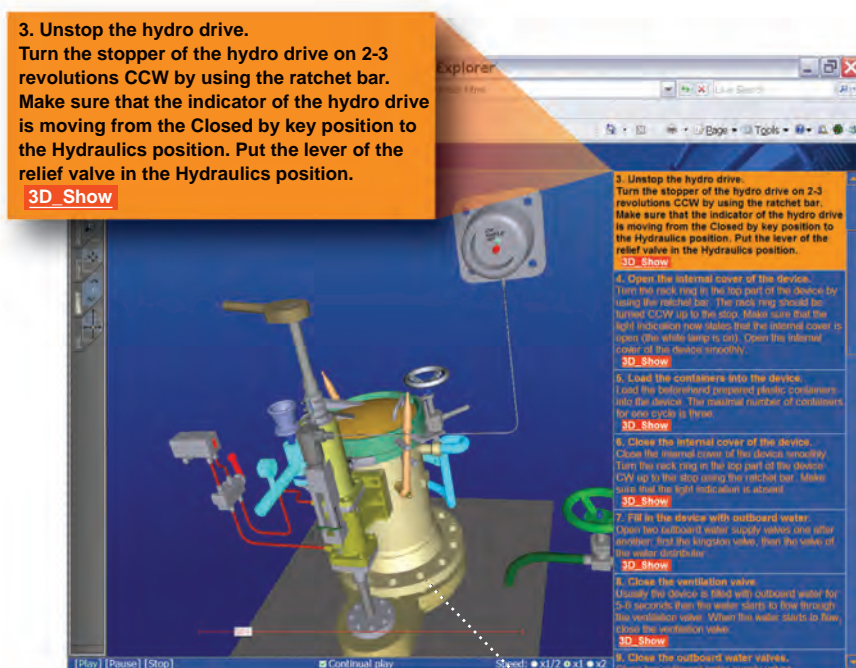
- **Concurrent product and documentation development accelerates time to market.** Link existing CAD data to textual procedures from your PDM/ERP system to automate the creation of 3D manuals for operations, maintenance and technical support. 'Dynamic update' syncs with design data to guarantee 100% accuracy.
- **Increase revenue opportunities.** Better support manuals increase customer loyalty and rate of customer retention, helping to up and cross-sell your products.
- **Cut costs, reduce total cost of ownership.** Why recreate new graphics for manuals when your engineers have already created applicable illustrations and data. Repurposing existing resources is more efficient, improves user comprehension and reduces costly errors.
- **Share outputs and reuse content in downstream processes.** Reuse visualizations and simulations created with RapidManual in computer-based training and other support materials at no extra cost.
- **Achieve compliance and safety.** Up-to-date product data and better views of complex equipment and assemblies help achieve regulatory compliance.

What's the result? More visual, more effective product documentation saves time and money in manufacturing, servicing, repairs, and delivers a better 'total product'.

HOW IT WORKS

'Visual Know-How' for Product Documentation

- Navigate the product, parts and assemblies
- Rotate, zoom and view from different angles
- Play, pause and skip through simulation to gain an intuitive understanding of the procedure
- Textual description of procedural step is highlighted as animation is played



Speed up product docs development and decrease assembly errors.

Users can zoom in, rotate and interact with 3D image.

AIRCRAFT MAINTENANCE AT BOEING

Boeing – the world's leading aerospace company and the largest manufacturer of commercial jetliners and military aircraft – uses Cortona3D RapidManual as a primary component of its new Maintenance Performance Toolbox, an innovative set of performance-enhancing solutions for aircraft maintenance and troubleshooting.

"We are delighted with the response of our customers to the Visual Know-How technology provided by Cortona3D. We look forward to development of further 3D-powered solutions for our airline customers."

*Freelon Hunter,
Director of Maintenance Services
Product Development,
Boeing Commercial Aviation Services*



FEATURES

- No 3D or CAD technology know-how required
- ISO open standard enables seamless integration with other applications
- Lightweight format enables delivery via the Web, intranet, using laptop or Pocket PC
- Intellectual Property is protected as optimized CAD data cannot be re-engineered
- Integrates into existing work processes
- 'Dynamic update' ensures product modifications are readily integrated into the manuals
- Support for ATA and S1000D standards

SYSTEM RECOMMENDATIONS

- 1.5 GHz microprocessor or higher RAM: 512 MB
- Windows 2000 SP2 or Windows XP, Internet Explorer 6.0 and DirectX 7
- Additional software:
Microsoft XML (MSXML) Core Services

